

**PLANNING**

**GUIDE**

**Solo**

**COLLECTION**

**BY TRIFAB**  
I N C

2718, Principal st., Tracadie E1X 1A1

758, Principal st., Beresford

1-877-395-3764

**PLANNING AND MEASUREMENT ADVICE**

**RECOMMENDATIONS**

**CABINET PRICE LIST**

**GRID SHEET AND ORDER LIST**

# Measurements

## Important verifications

### 1. MEASURING THE WALLS

- Measure the length of your walls
- Note if the measurements are taken with or without sheetrock

### 2. POSITION OF WINDOWS AND DOORS

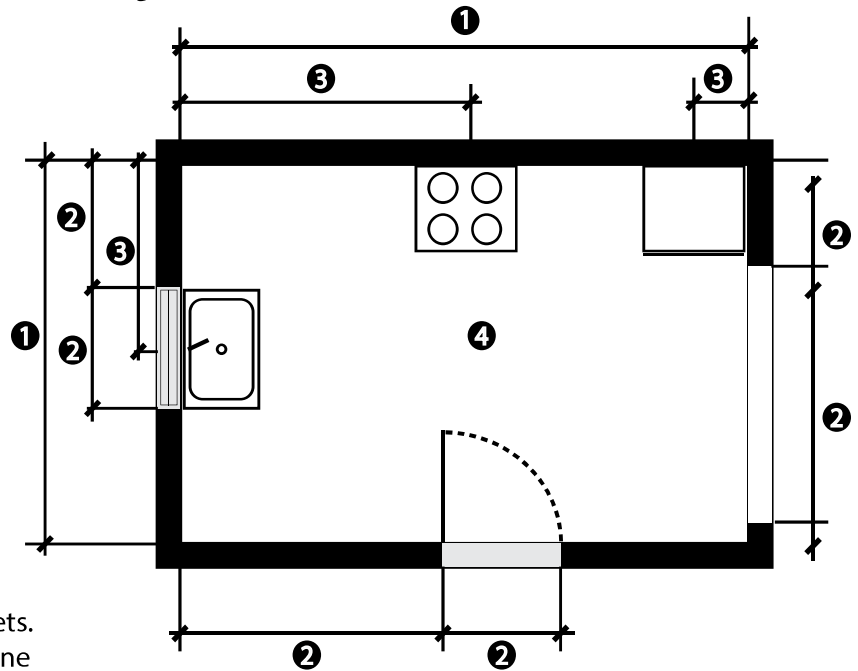
- Measure the distance from the corner of the wall to the framing of the windows and/or doors.
- Measure the width and height of your windows including the frame.
- If you plan on changing the framing for a wider or narrower one it is important to include the difference in your measurements.

### 3. POSITION OF APPLIANCES, PLUMBING AND ELECTRICAL OUTPUTS.

- If your appliances and your sink remain at the same location, measure the distance between the wall that is closest to the centre of the pipes and/or outlets.
- Do the same for all outlets, switches and/or telephone jacks.

### 4. CEILING HEIGHT

- Measure the height from the floor. This is important if you wish to box off the top of your cabinets or, if the ceiling is lower than standard.



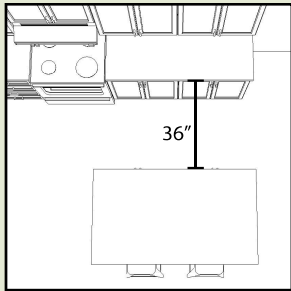
## Other important measurements:

- Note the dimensions of the household appliances that you have or plan to order. It is important to know the model of your range, the model will have an impact on the cut of your countertop.
- The recommended distance between two countertops is 36". If you are planning of having an island that would be positioned in front of the refrigerator, the recommended pass way is a minimum of 42".
- Take a special attention to the the pantry cabinet. This cabinet is fabricated in one piece. To be able to place it upright, the height of the ceiling must be at least 87 ½".
- Analyse the path that you will have to go threw to take the cabinets and countertop where you want to install them. Make sure that the cabinets and countertops can pass easily.

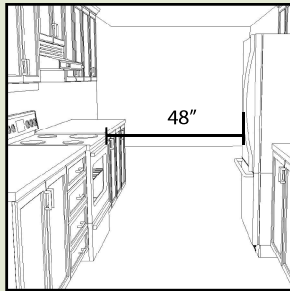
Visit our website [www.trifab.ca](http://www.trifab.ca) to find printable grid sheets, as well as all the documentation sheets by clicking on the Solo Collection logo.



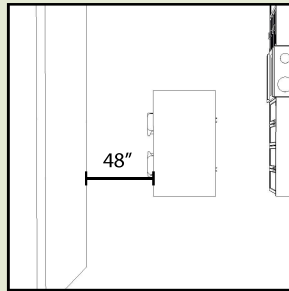
# Recommendations



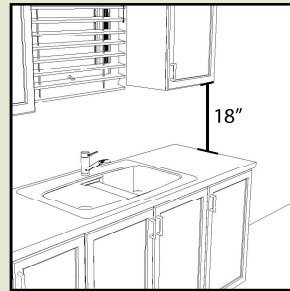
Allow a minimum distance of 36" between cabinets.



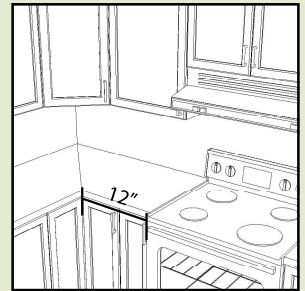
Plan for 48" of clearance in a situation where appliances could be one in front of each other.



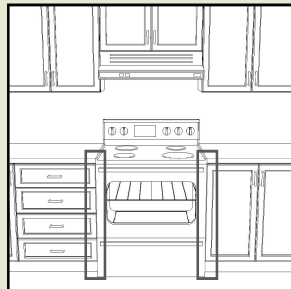
Allow a minimum distance of 48" between a lunch counter and a wall or obstacle.



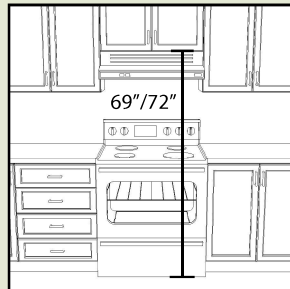
Install the upper cabinets at 18" above the countertop or at 54" from the floor. Do not take into account the light molding.



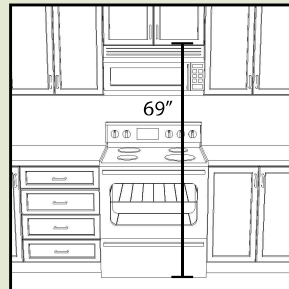
Plan for a width of 12" between the range and the corner of countertops.



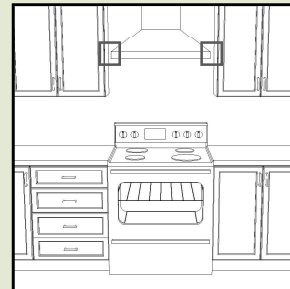
Leave an additional 1/4" clearance on each side of the range to facilitate its installation.



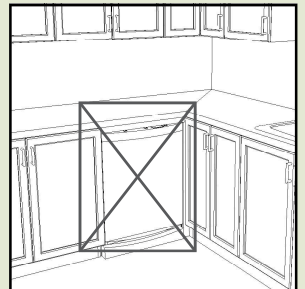
Install the bottom cabinet of a standard hood at a minimum of 69" from the floor if it's an electric range, and at a minimum of 72" from the floor if it is a gas range.



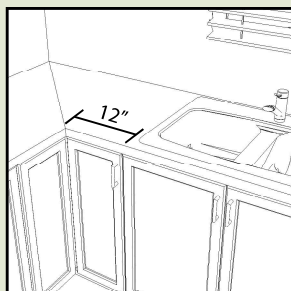
Install the bottom cabinet of a microwave hood at a minimum of 69" from the floor for an electric range. This type of hood is not installed with a gas range.



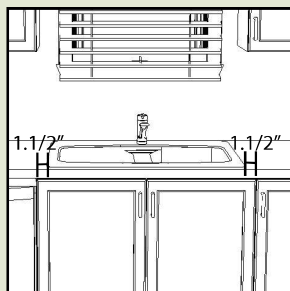
Leave a minimum clearance of 1.1/2" on each side of a chimney hood.



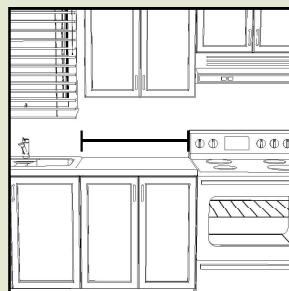
Avoid placing an appliance at the junction of two countertops to avoid creating a conflict of opening between the doors.



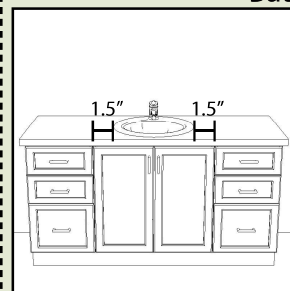
Leave a distance of at least 12" between the sink and a countertop joint.



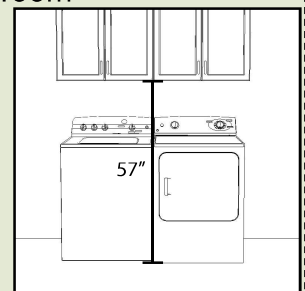
Choose a base for your sink that is at least 3" wider than the sink.



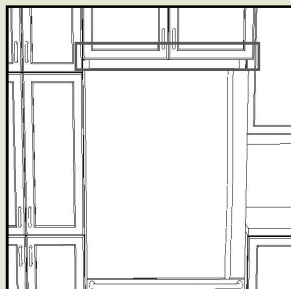
Plan for a space between the range and sink for food preparation.



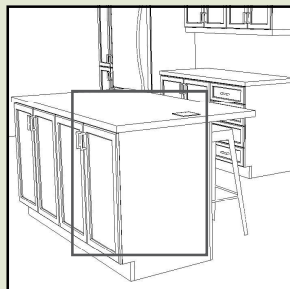
Choose a base for your sink that is at least 3" wider than the sink.



Install the wall cabinets over the washer and dryer at a minimum of 57" from the floor if the appliances have a door opening from the top.



Leave a clearance of at least 1" above the refrigerator.



An electrical outlet on an island is required. Plan its installation in a cabinet.



If a dishwasher is adjacent to a refrigerator or pantry panel, use a dishwasher panel or 1.3/4" angled brackets to support the countertop.

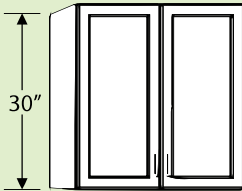
## Bathroom

\* The installation heights that are listed for the installation of hoods are recommendations only. Always refer to the installation guide of the hood for the installation height that should be respected.

# Vanity

## Wall laundry Code: **WL**

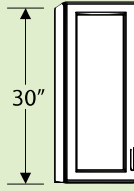
15" deep  
27 and 30" wide



30" high x 15" deep	A \$	B \$	C \$	D \$	E \$
27" wide	197	247	310	334	N/A
30" wide	207	263	333	359	N/A

## Wall vanity Code: **WV**

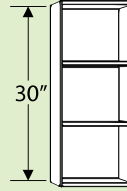
9" deep  
12 to 18" wide



30" high x 9" deep	A \$	B \$	C \$	D \$	E \$	ABCDE no doors
12" wide	121	144	172	182	N/A	121
15" wide	131	159	194	207	N/A	131
18" wide	141	174	216	232	N/A	141

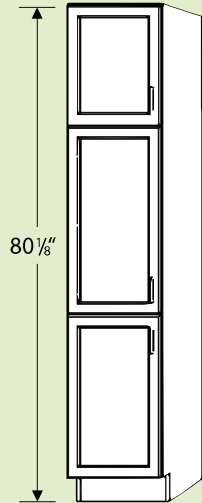
## Wall vanity no doors Code: **WVND**

9" deep  
12 to 18" wide



## Linen Code: **L**

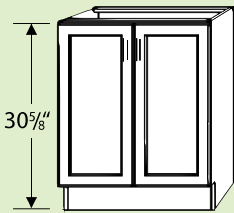
18" deep  
12 to 18" wide



80" high x 18" deep	A \$	B \$	C \$	D \$	E \$
12" wide	350	407	477	503	N/A
15" wide	376	446	533	567	N/A
18" wide	401	485	591	631	N/A

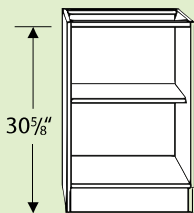
## Base vanity Code: **BV**

21" deep  
12 to 36" wide



## Base vanity no door Code: **BVND**

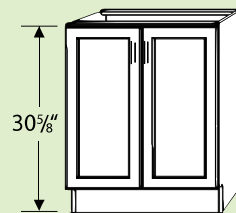
21" deep  
12 to 36" wide



30 1/2" high x 21" deep	A \$	B \$	C \$	D \$	E \$	ABCDE no door
12" wide	160	183	211	222	N/A	160
15" wide	170	199	234	248	N/A	170
18" wide	181	215	258	274	N/A	181
21" wide	191	231	281	300	N/A	191
24" wide	210	255	312	334	N/A	210
30" wide	230	287	359	386	N/A	230
36" wide	251	320	405	438	N/A	251

## Base vanity sink Code: **BVS**

21" deep  
24 to 36" wide

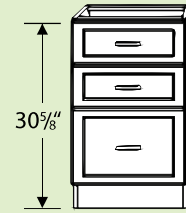


open back for plumbing

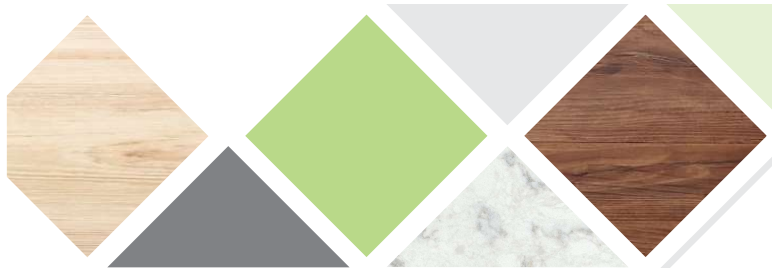
30 1/2" high x 21" deep	A \$	B \$	C \$	D \$	E \$
24" wide	214	259	316	338	N/A
30" wide	232	289	360	387	N/A
36" wide	250	318	404	436	N/A

## Drawer vanity Code: **3DV**

21" deep  
12 to 18" wide

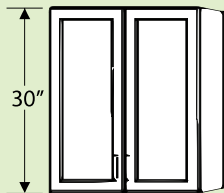


30 1/2" high x 21" deep	A \$	B \$	C \$	D \$	E \$
12" wide	248	305	309	322	N/A
15" wide	254	310	318	331	N/A
18" wide	261	315	330	344	N/A

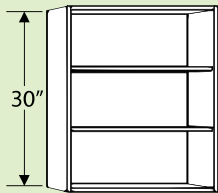


# Kitchen walls

Wall  
Code: **W**  
12" deep  
9 to 36" wide

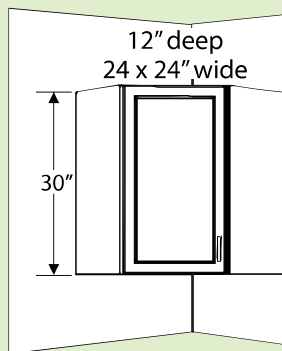


Wall no doors  
Code: **WND**  
12" deep  
9 to 36" wide

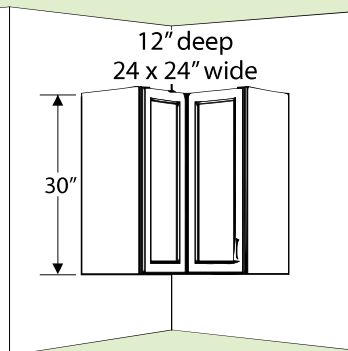


30" high x 12" deep	A \$	B \$	C \$	D \$	E \$	ABCDE no doors
9" wide	115	132	153	161	N/A	115
12" wide	125	147	175	186	N/A	125
15" wide	135	163	198	211	N/A	135
15" wide with glass	329	369	392	414	N/A	N/A
18" wide	145	178	220	236	N/A	145
21" wide	154	193	242	261	N/A	154
24" wide	172	217	273	294	N/A	172
27" wide	182	233	296	319	N/A	182
30" wide	192	248	318	344	N/A	192
30" wide with glass	581	660	707	750	N/A	N/A
33" wide	202	263	340	370	N/A	202
36" wide	212	279	363	394	N/A	212

Diagonal wall  
Code: **DW**



Corner wall 90°  
Code: **CW**

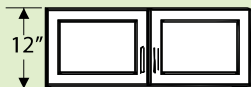


30" high x 12" deep	A \$	B \$	C \$	D \$	E \$
Diagonal 24" wide	186	216	254	268	N/A
Diagonal with glass	412	455	480	503	N/A
90° 24" wide	234	276	329	350	N/A

Wall refrigerator/sink/range

Code: **W**

12" deep  
30 to 36" wide

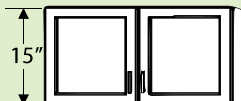


12" high x 12" deep	A \$	B \$	C \$	D \$	E \$
30" wide	134	167	184	195	N/A
33" wide	138	168	193	205	N/A
36" wide	142	169	202	215	N/A

Wall refrigerator/sink/range

Code: **W**

12" deep  
24 to 36" wide



15" high x 12" deep	A \$	B \$	C \$	D \$	E \$
24" wide	136	167	191	202	N/A
30" wide	143	171	206	220	N/A
33" wide	148	179	218	232	N/A
36" wide	153	187	229	245	N/A

Wall flip

Code: **WF**

12" deep  
30 to 36" wide

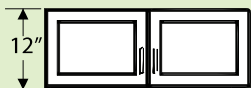


15" high 12" & 24" deep	A \$	B \$	C \$	D \$	E \$
30" wide x 12" deep	210	239	274	288	N/A
33" wide x 12" deep	216	247	286	301	N/A
36" wide x 12" deep	222	256	298	315	N/A
30" wide x 24" deep	232	261	296	310	N/A
33" wide x 24" deep	240	271	310	325	N/A
36" wide x 24" deep	247	281	324	340	N/A

Wall refrigerator

Code: **W**

24" deep  
30 to 36" wide

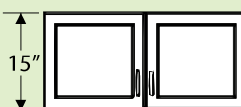


12" high x 24" deep	A \$	B \$	C \$	D \$	E \$
30" wide	147	180	198	208	N/A
33" wide	152	182	207	219	N/A
36" wide	157	184	217	230	N/A

Wall refrigerator

Code: **W**

24" deep  
24 to 36" wide

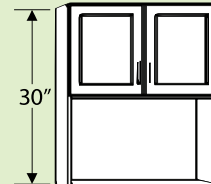


15" high x 24" deep	A \$	B \$	C \$	D \$	E \$
24" wide	149	180	204	215	N/A
30" wide	158	186	221	234	N/A
33" wide	164	195	233	248	N/A
36" wide	169	203	245	261	N/A

Micro wave wall

Code: **MW**

12" deep  
24" wide



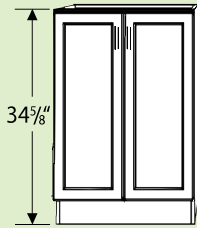
30" high x 12" deep	A \$	B \$	C \$	D \$	E \$
24" wide	177	210	227	238	N/A

# Kitchen bottoms



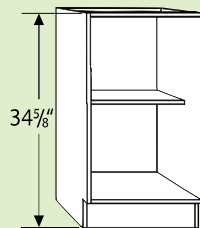
Base  
Code: **B**

24" deep  
9 to 36" wide



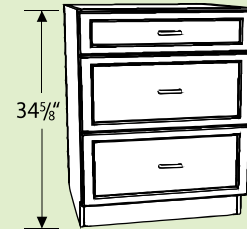
Base no door  
Code: **BND**

24" deep  
9 to 36" wide



Drawer base  
Code: **3DB**

24" deep  
24 to 33" wide

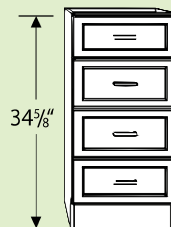


34 5/8" high x 24" deep	A \$	B \$	C \$	D \$	E \$	ABCDE no doors
9" wide	158	174	195	203	N/A	158
12" wide	168	191	219	229	N/A	168
15" wide	179	207	242	255	N/A	179
15" wide -1 garbage	333	361	396	409	N/A	N/A
18" wide	190	223	265	281	N/A	190
18" wide -2 garbage	383	417	459	475	N/A	N/A
21" wide	200	239	288	307	N/A	200
24" wide	231	275	331	352	N/A	231
27" wide	241	292	354	378	N/A	241
30" wide	252	308	378	404	N/A	252
33" wide	262	324	401	430	N/A	262
36" wide	273	340	424	456	N/A	273

34 5/8" high x 24" deep	A \$	B \$	C \$	D \$	E \$
24" wide	303	353	403	424	N/A
27" wide	316	368	429	452	N/A
30" wide	329	385	455	481	N/A
33" wide	342	404	480	509	N/A

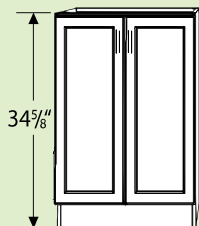
Drawer base  
Code: **4DB**

24" deep  
12 to 21" wide



Code: **SB**  
Sink base

24" deep  
24 to 36" wide

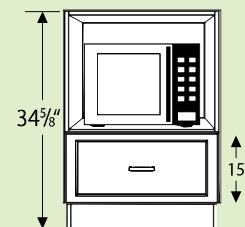


Open back for plumbing

34 5/8" high x 24" deep	A \$	B \$	C \$	D \$	E \$
12" wide	300	377	381	398	N/A
15" wide	306	383	387	404	N/A
18" wide	312	389	393	410	N/A
21" wide	321	394	408	426	N/A

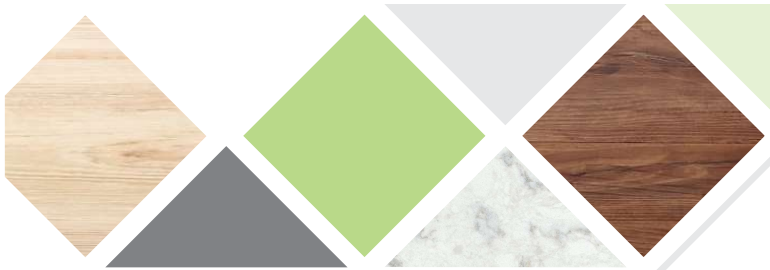
Micro wave base  
Code: **MWB**

24" deep  
24 and 27" wide



34 5/8" high x 24" deep	A \$	B \$	C \$	D \$	E \$
24" wide	222	266	322	343	N/A
27" wide	231	281	344	368	N/A
30" wide	240	296	366	392	N/A
33" wide	249	311	388	417	N/A
36" wide	258	325	409	441	N/A

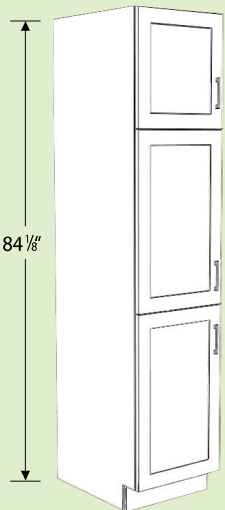
34 5/8" high x 24" deep	A \$	B \$	C \$	D \$	E \$
24" wide	256	278	306	317	N/A
27" wide	267	292	323	335	N/A



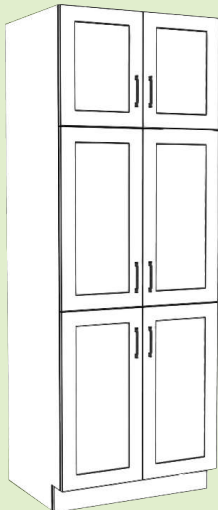
# Kitchen Bottoms

Pantry base  
Code: **PB**

24" deep  
15 to 18" wide

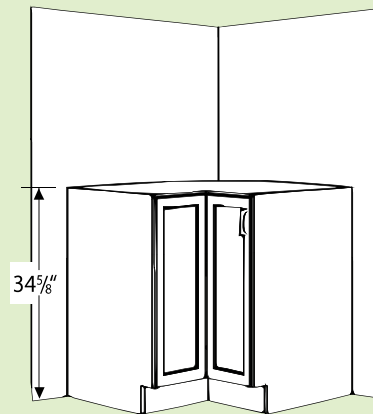


24" deep  
24 to 36" wide



84" high x 24" deep	A \$	B \$	C \$	D \$	E \$
15" wide	433	506	599	634	N/A
15" wide 2 pull-out shelves	562	636	728	763	N/A
15" wide 4 pull out shelves	691	765	857	892	N/A
18" wide	460	549	660	702	N/A
18" wide 2 pull-out shelves	591	679	790	832	N/A
18" wide 4 pull-out shelves	721	810	920	962	N/A
24" wide	542	660	807	863	N/A
24" wide 2 pull-out shelves	674	792	939	995	N/A
24" wide 4 pull-out shelves	806	924	1071	1127	N/A
30" wide	598	745	930	1000	N/A
30" wide 2 pull-out shelves	731	879	1063	1133	N/A
30" wide 4 pull-out shelves	865	1013	1197	1267	N/A
36" wide	653	831	1052	1137	N/A
36" wide 2 pull-out shelves	789	966	1188	1272	N/A
36" wide 4 pull-out shelves	924	1102	1323	1407	N/A

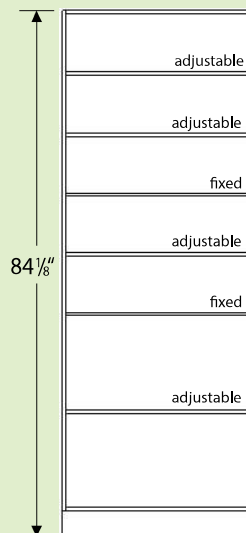
Corner base 90°  
Code: **CB**



34 5/8" high x 24" deep	A \$	B \$	C \$	D \$	E \$
36" wide	280	323	376	396	N/A

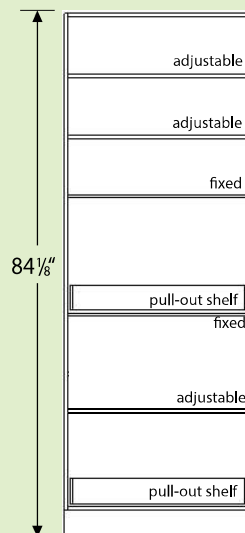
Pantry base  
Code: **PB**

standard



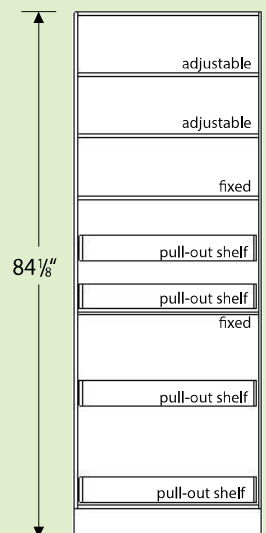
Pantry base  
Code: **PB2PO**

2 pull-out shelves



Pantry base  
Code: **PB4PO**

4 pull-out shelves



# Finishings and Accessories



## Pannels

Pannels Island backs 34 5/8" high	ABCDE \$
36 5/8" wide	56
42 5/8" wide	58
48 5/8" wide	63
54 5/8" wide	70
60 5/8" wide	75
66 5/8" wide	92
72 5/8" wide	101
78 5/8" wide	113
84 5/8" wide	120
96 5/8" wide	127

Side Pannels	ABCDE \$
24 1/2" w. x 36" h.	46
24 1/2" w. x 84 5/8" h.	81
27" w. x 84 5/8" h.	90
30" w. x 84 5/8" h.	101

Filler Pannels	ABCDE \$
4 1/2" h. x 96" w.	42
6" h. x 96" w.	49
12" h. x 96" w.	57

## Accessories

Cutlery tray	43
Cutlery tray for big utensils	43
Pull out towel bar	41
15 litre garbage	71
35 litre garbage cover	29
Lunch counter bracket	43
Litchen installation kit	89
Vanity installation kit	69

## Moldings

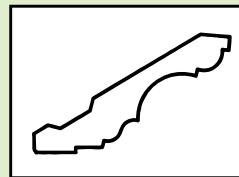
Crown moldings (8' long)

#R394 Stained birch	113 \$
#WP22 MDF laquered	108 \$
#WP22 Polyester Artic White	77 \$

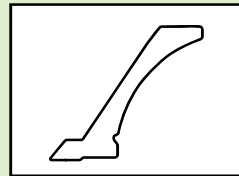
Light molding (8' long)

#LM-BMC Stained birch	82 \$
#LM-4022 Polyester	67 \$
#LM 5/5" MDF laquered	88 \$
#LM 5/8" Melamine	41 \$

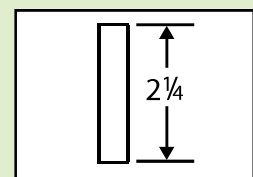
Crown molding #R364



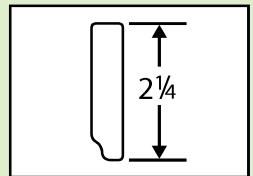
Crown molding #WP22



Light molding #BMC/#LM



Light molding #4022





# Finishings and Accessories

## Counter tops

Counter 25½" deep model futuriste	47" \$	59" \$	71" \$	96" \$	120" \$	144" \$
9476-58	142	178	213	271	339	406
6696-58						
5037-38						
9312-20NG						
4952-22						

Bar top 26½" deep model futuriste	47" \$	59" \$	71" \$	96" \$	120" \$	144" \$
9476-58	142	178	213	271	339	406
6696-58						
5037-38						
9312-20NG						
4952-22						

Bar top 30" deep model futuriste	47" \$	71" \$	96" \$	120" \$	144" \$
9476-58	220	329	426	532	639
6696-58					
5037-38					
9312-20NG					
4952-22					

Bar top 36" deep model futuriste	47" \$	71" \$	96" \$	120" \$	144" \$
9476-58	258	387	503	671	805
6696-58					
5037-38					
9312-20NG					
4952-22					

Bar top 50½" deep model futuriste	96" \$	120" \$	144" \$
9476-58	607	737	884
6696-58			
5037-38			
9312-20NG			
4952-22			

## Legend

### Door materials

- A — Melamine doors
- B — Polyester doors
- C — Wood doors
- D — Laquered doors
- E — N/A

Please review the included order list to select your desired cabinets and accessories.

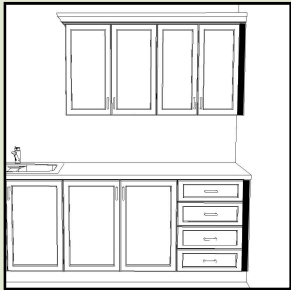
# Recommendations

All the cabinets in the the Solo Collection are manufactured with finished sides matching the door color.

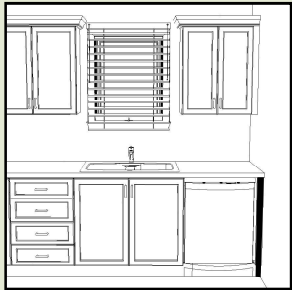
There for, there is no need to order extra side panels, with the exeption of certain situations.

**!** All filler panels come in lenghts of 96" and must be cut to the desired lenght. A piece of edging will also be supplied.

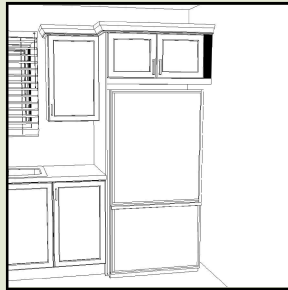
## Filler panels



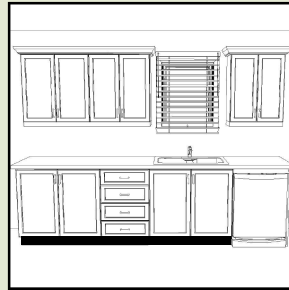
Plan for a 1.1/4" filler panel when a cabinet is adjacent to a wall.



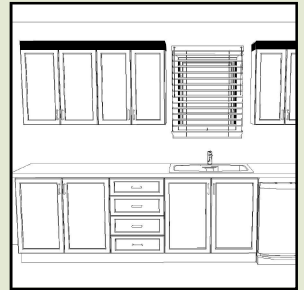
Plan for a 1.1/4" filler panel when a dishwasher is adjacent to a wall, as well as a dish washer panel.



Plan for a filler panel if the refrigerator is adjacent to a wall. Check the refrigerator's specifications to determine the width needed for the filler panel.

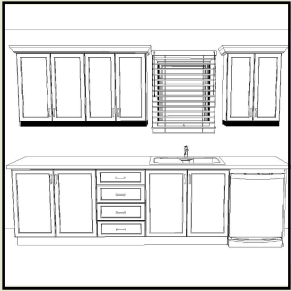


Plan for 4.1/2" high kick plates to cover the unfinished cabinet bottoms.

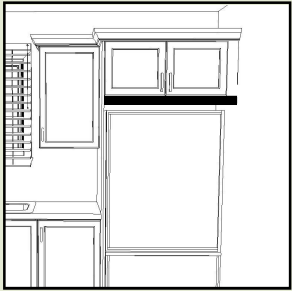


Plan for a 6 to 12" filler panel if you wish to close off your cabinets to the ceiling.

## Finishing panels

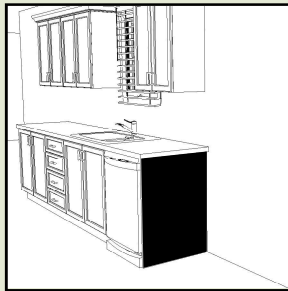


Light moldings are a good way to conceal lights or to conceal the unfinished bottom (white) of your upper cabinets.



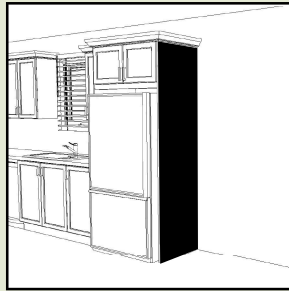
Plan for a light molding below the refrigerator cabinet if there is too much open space between the two of them.

## Dish-washer panel



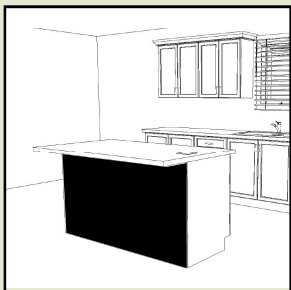
Plan for a dishwasher panel if the side of the dishwasher is exposed.

## Full height refrigerator panel

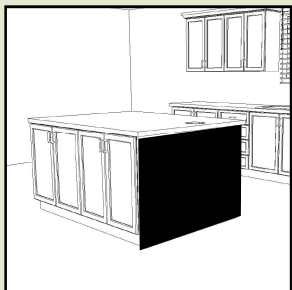


Plan for a refrigerator panel if you wish to hide the side of the refrigerator.

## Back and side island panels



Plan for a back panel on islands.



Plan for side panels on islands if there are cabinets back to back.